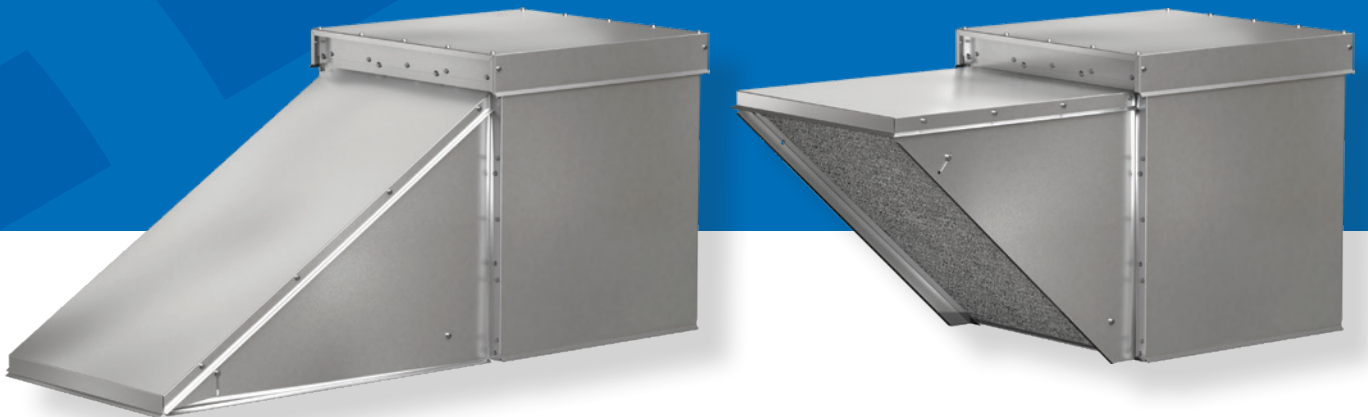


ACCUREX

Mixed Flow Untempered Supply Fans

Model XKID



IMPROVES AIRFLOW AND OPERATIONAL EFFICIENCIES

Efficient, balanced airflow is essential to ensure proper ventilation in any commercial kitchen space. While there are numerous supply fans available, not all offer the same performance or configurable options to meet your unique operational requirements. Accurex® mixed flow untempered supply fans operate at higher efficiencies compared to other supply fan styles, saving energy and costs while reducing maintenance needs and sound levels. The compact footprint allows for easy integration in any existing space or when designing new commercial kitchen environments. Plus, Accurex offers a variety of options and accessories for complete design flexibility.

THE ACCUREX ADVANTAGE



IMPROVED, MORE EFFICIENT AIRFLOW USES LESS POWER FOR INHERENT ENERGY SAVINGS



GREENHECK® VARI-GREEN® MOTORS REQUIRE LESS MAINTENANCE AND REDUCE OPERATING COSTS BY ROUGHLY 30-50% COMPARED TO OTHER FANS



FLEXIBLE OPTIONS AND ACCESSORIES CONFIGURABLE FOR A VARIETY OF OPERATING CONDITIONS



REMOVABLE PANELS ON EITHER SIDE OF UNIT ALLOWS FOR EASY ACCESS FOR INSPECTION AND SERVICE



REDUCED SOUND LEVELS FOR QUIETER OPERATION AND LOW VOLUME REQUIREMENTS

DELIVERING FLEXIBILITY AND FUNCTIONALITY



Accurex mixed flow supply fans are compact and ideal for filtered roof-mounted supply or untempered make-up air applications. Multiple sizes, configurations and filtration options are available to tailor your selected supply fan to the specific requirements of your application, ensuring optimal performance.

SIZES AND CONFIGURATIONS

- Direct drive with variable speed
- Optional field installed hood and cover
- Horizontal or bottom intake and discharge configurations

PERFORMANCE

- Up to 16,750 cfm
- Up to 2.75 in. wg of static pressure

FILTRATION

- Primary: Aluminum mesh
- Secondary: MERV 13 (optional)

STANDARD AND OPTIONAL FEATURES

- STANDARD FEATURE
- OPTIONAL FEATURE

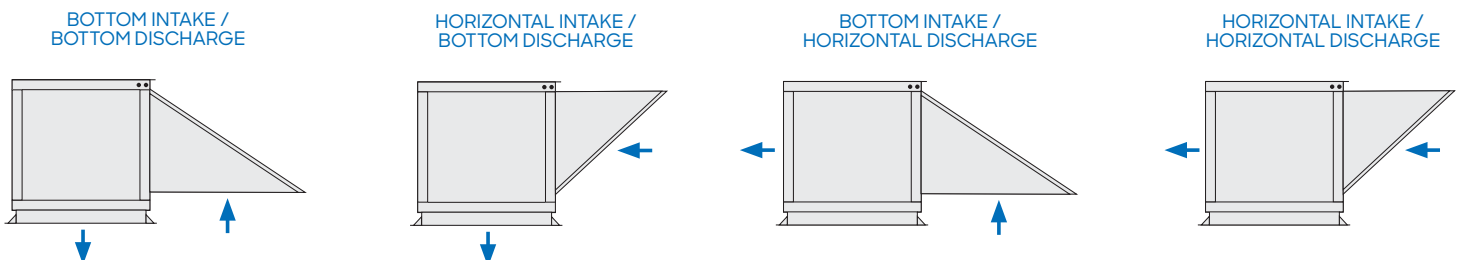


- 1 Square duct mounting collar
- 2 Greenheck Vari-Green Motor
- 3 Insulation
- 4 Guards
- 5 Isolators
- 6 Coatings
- 7 Filtration
- 8 Dampers (multiple options)
- 9 MERV 13 2-inch filters (bottom intake only)
- 10 Roof curbs and accessories

OPTIONAL FEATURES & ACCESSORIES

- Flexible intake and discharge options, shown below
- Duct adapters
- Rubber or spring mount isolator options
- Multiple motor control options including 0-10 VDC, dial on motor and remote dial
- Disconnect adapters & switches
- Several coating color options with hi-pro polyester finish
- Duct collars

FLEXIBLE INTAKE AND DISCHARGE OPTIONS



Mixed flow supply fans are engineered with features that bring increased efficiencies and cost and energy savings to your operation.



Greater airflow

Higher efficiency mixed flow wheel improves airflow and uses less power for increased performance and energy savings



Ease of service

Panel openings on both sides of the unit allow for quick access and simplified inspection



Minimal maintenance

Standard 1-inch aluminum filters are washable making it easy to maintain clean air, with the option to add pleated MERV 13 filters



Greenheck Vari-Green Motor

Higher efficiency and integral fan balancing results in fewer parts, lower maintenance and cost savings of around 30-50% over other motors



Compact size

Smaller footprint integrates easily in existing spaces and when designing new commercial kitchen environments



Quiet operation

Square design provides a larger discharge area, so outlet velocities are reduced for quieter operation



Quality construction

Totally enclosed motors eliminate the need for a motor cover and improve motor access



Flexible options

Highly configurable, with multiple discharge, mounting, coating, and control options are designed to meet your specific needs

Discover how simple the
Accurex way can be at
[Accurex.com](https://www.accurex.com)