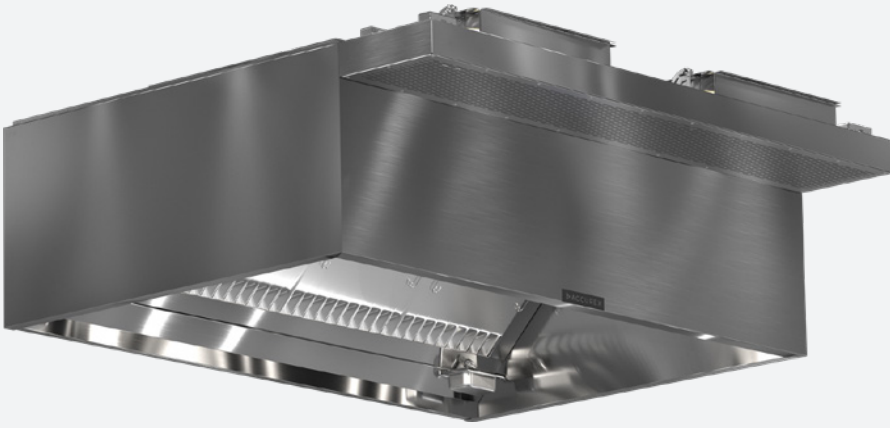


# Introducing our redesigned air supply plenums.



An air supply plenum (ASP) is intended to bring in large quantities of outside air which can directly impact the performance of the exhaust hood. How that air is distributed throughout the kitchen is crucial to the hood's ability to capture contaminated air and can also affect comfort levels in the kitchen space.

We've upgraded our ASP aesthetics and functionality with a few notable design enhancements to ensure optimal performance levels in any commercial kitchen condition.

## KEY DIFFERENCES SET US APART

- Shortening the plenum to 4" improves visual appeal and performance with the hood.
- Faster lead times.
- New design eliminates air pockets for optimal airflow.
- Optimized collar sizing to keep velocities lower and less supply air impact on the hood performance.
- Easy removal of perforated panel for cleaning when necessary.
- Rectangular slot perforation provides the best performance out of multiple tested shapes. Accurex also manufactures these panels, offering exceptional value and quality control.

	Accurex - ASP
Length	36" - 144"
Height	4"
Width	14", 18"
Perf Hole Shape	Rectangular Slots



### Design tips to consider:

- Based on lab testing and computer modeling, recommended velocity through the collars is 267 fpm or less.
- For supply air volumes exceeding 183 CFM/lin-ft, the 18"-wide plenum should be utilized.
- Adding supply plenums on the sides of the hood in addition to the front can help reduce air volume and velocities when needed.
- Increasing the distance from the plenum to the floor is advised for best performance.
- Adding end skirts to the hood or increasing overhangs to the appliances may allow you to increase supply air volume per foot and still achieve ideal hood performance.

**DISCOVER HOW SIMPLE THE ACCUREX WAY CAN BE AT ACCUREX.COM**