

# Modular Make-Up Air with Integral Packaged DX Cooling

Models XDGX, XIGX, XMSX

## Take the edge off!

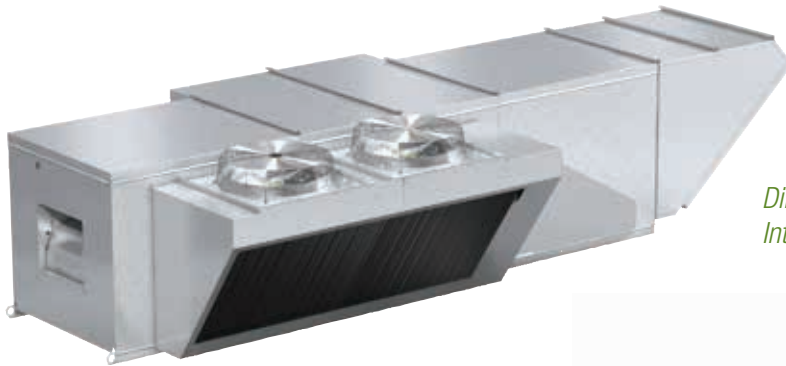
Providing unconditioned make-up air into the kitchen space, even through well-designed perforated plenums near the hood, can create an uncomfortable work environment during summer months.

Typical air conditioning used to increase comfort levels like those used in the dining areas need to cool and dehumidify air to a 55°F supply air temperature, which can disrupt the food preparation process while significantly increasing equipment first costs and operating costs.

The packaged DX cooling option for the XDGX, XIGX, and XMSX models are designed to cool the kitchen make-up air to a 70-75°F supply air condition at an economical first cost:

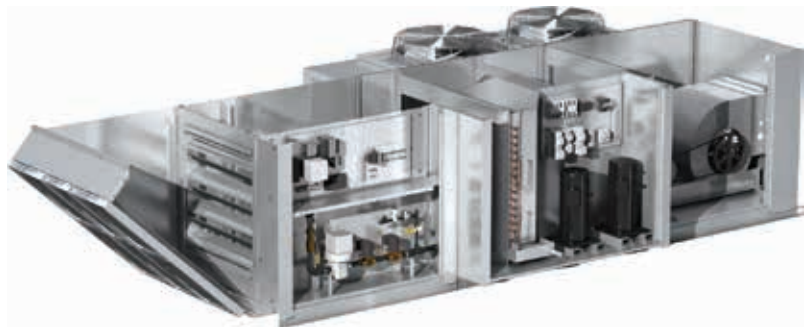
- Improving space comfort
- Enhancing employee productivity
- Promoting employee retention

- 1,000 to 7,500 cfm
- 3-16 Nominal Cooling Tons
- Direct or Indirect Gas, Hot Water, or Electric Heating
- Optional Variable Air Volume



Condenser fans are efficient, direct-drive, statically and dynamically balanced.

*Direct Gas-Fired unit with  
Integral Packaged DX Cooling*

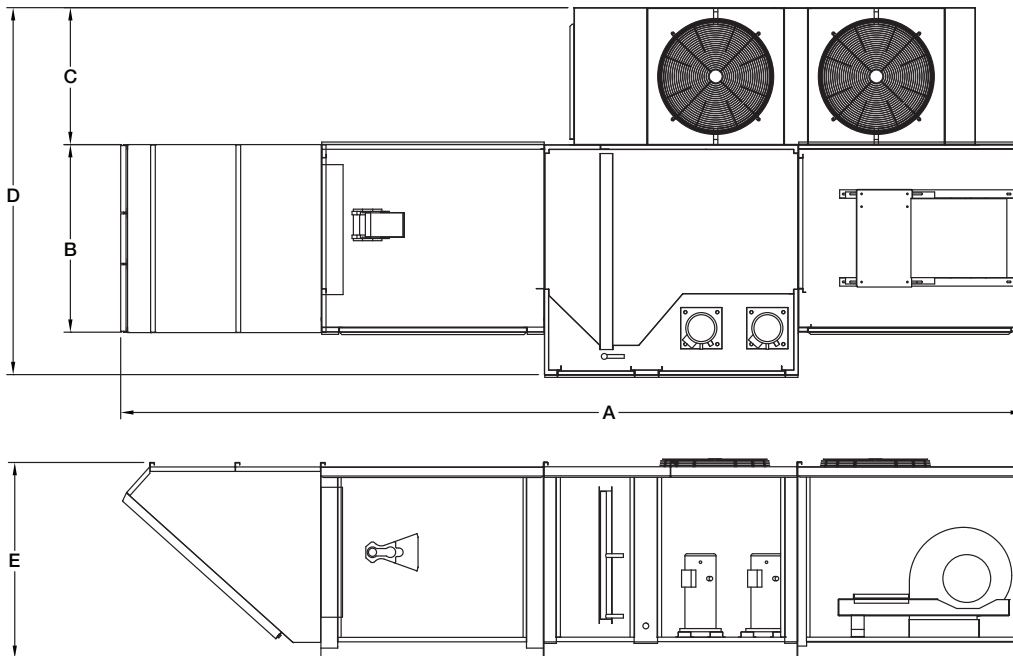


- Condenser and Evaporator Coils have copper tubes with permanently expanded aluminum fins. Evaporator coils are mounted on a stainless steel drain pan.
- Thermal Expansion Valves provide refrigerant control. Head pressure control provides further control at low-load conditions.
- Compressors are quiet-running, hermetic scroll-type. They are mounted in an isolated compartment to be serviceable without affecting airflow, and are mounted on neoprene isolators to minimize vibration transmission and noise.

# Features and Benefits

The packaged DX systems available with XDGX, XIGX and XMSX products are designed specifically for providing comfortable supply air conditions for commercial kitchen applications. The pre-engineered package is piped and charged at the factory, providing single-source responsibility and reduced installation costs.

Standard Feature	Benefit
R-410A refrigerant	Environmentally friendly.
High pressure manual reset Low pressure automatic reset	Ensures the refrigeration system will operate in a safe performance range.
Liquid line filter-dryer	Removes water, debris and other contaminants from the refrigerant.
Service / Charging valves	Simplified maintenance resulting in lower maintenance costs.
Sight glass / moisture indicator	Provides a view into the system.



**Intertek**

The ETL Listed Mark is accepted as a product's mark of compliance to applicable electrical, gas and other safety standards. Intertek is an OSHA recognized NRTL (Nationally Recognized Testing Laboratory) and accredited as a Testing Organization and Certification Body by the Standards Council of Canada.

## Dimensional Data

Housing Size	Nominal Tons	Dimensions (inches)					Approximate Weight (lbs)
		A	B	C	D	E	
XDGX-H12	3, 5, 6, 7	156	33.75	25.5	70	39	1400
XDGX-H22	7, 9, 10	212	45	32	87	45	2200
XDGX-H32	10, 12, 16	237	52	35.5	99	49	2800

The dimensional data shown is for a standard direct gas-fired unit with a filtered intake hood. Additional configurations are available through Accurex's Computer Aided Product Selection program.



Accurex, LLC  
 P.O. Box 410 • Schofield, WI 54476  
 Phone: 800.333.1400 • Fax: 715.241.6171  
[www.accurex.com](http://www.accurex.com)  
 A Greenheck Company

**Our Commitment:** As a result of our commitment to continuous improvement, Accurex reserves the right to change specifications without notice. Specific Accurex product warranties are located on [accurex.com](http://accurex.com) within the product area tabs and in the Library under Warranties.

01.ACX.1008 R1 4-2011 IW  
 Modular Make-Up Air with Integral Packaged DX Cooling  
 Copyright © 2011 Accurex